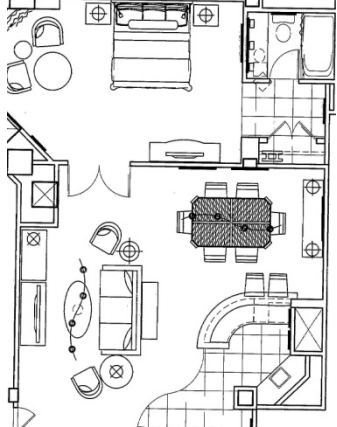
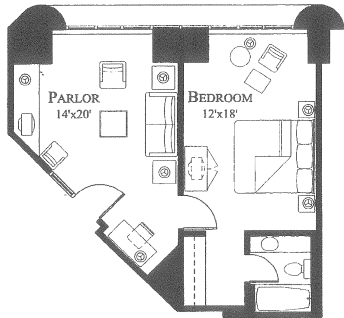
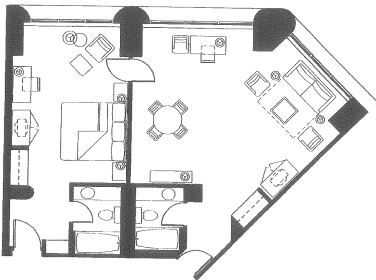


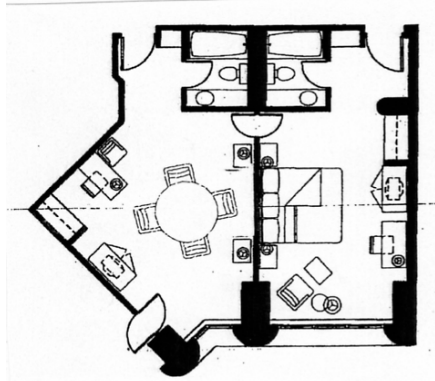
Marriott Wardman Park Hotel Interviewing Room Diagrams and Descriptions

The following are interviewing room descriptions and diagrams. The floor plans are of typical interviewing rooms in each category; the actual suite may vary somewhat, particularly in the Wardman Tower. All interviewing rooms and guest rooms are non-smoking. Please note that all rooms are subject to 14.8% sales tax.

Center Tower

Interviewing Room Floor Plan	Description
	<p><u>Center Suites</u> \$710.00 per night (<i>plus tax</i>)</p> <ul style="list-style-type: none"> • One bedroom suite • Choice of king bed or two double beds • Bedroom entrance is through the parlor only • Seating capacity = 10 persons, includes the parlor's sofa, two arm chairs, and one table which seats six
	<p><u>Junior Suites</u> \$490.00 per night (<i>plus tax</i>)</p> <ul style="list-style-type: none"> • One bedroom suite • King bed only • Bedroom entrance is through the parlor only • Seating capacity = 5 persons, includes the parlor's sofa and two arm chairs
	<p><u>Deluxe Interviewing Rooms</u> \$520.00 per night (<i>plus tax</i>)</p> <ul style="list-style-type: none"> • Guest room converted to interviewing room, with connecting or adjacent bedroom • Choice of king bed or two double beds in bedroom • Interviewing room and bedroom have separate bathrooms and separate entrances to the hall • Seating capacity = 10 persons, includes a love seat, two arm chairs, and a one draped banquet table with 6 banquet chairs

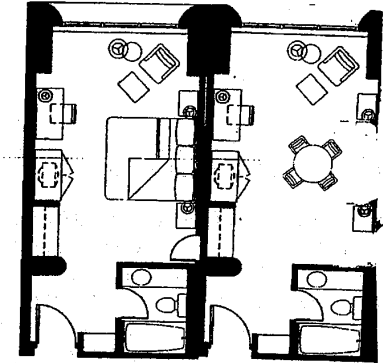
Please note: Every effort is made to ensure the accuracy of the interviewing room floor plans and descriptions. Changes and alterations may occur and are beyond the control of the AALS.



Standard Interviewing Rooms

\$500.00 per night (*plus tax*)

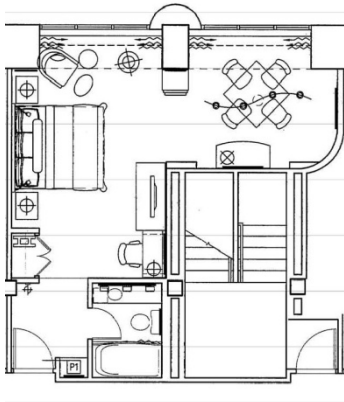
- Guest room converted to interviewing room, with connecting or adjacent bedroom
- Choice of king bed or two double beds in bedroom
- Interviewing room and bedroom have separate bathrooms and separate entrances to the hall
- **Seating capacity = 7 persons**, includes one draped banquet table with 6 banquet chairs and an armchair



Interviewing Rooms

\$480.00 per night (*plus tax*)

- Guest room converted to interviewing room, with connecting or adjacent bedroom
- Choice of king bed or two double beds in bedroom
- Interviewing room and bedroom have separate bathrooms and separate entrances to the hall
- **Seating capacity = 7 persons**, includes one draped banquet table with 6 banquet chairs and an armchair



"Eleven" Series Junior Suites

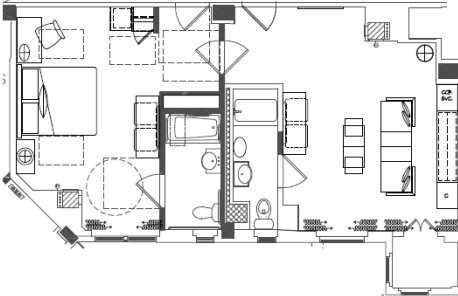
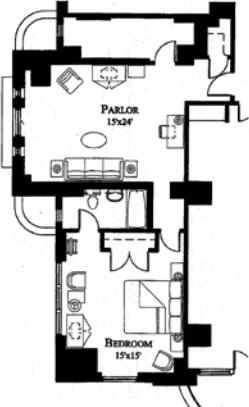
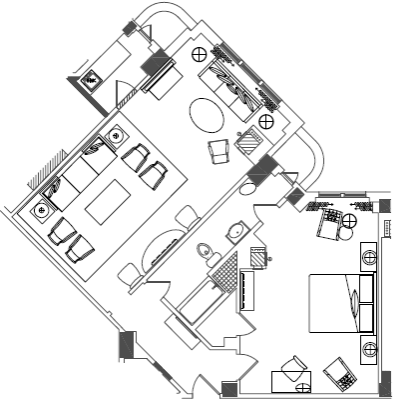
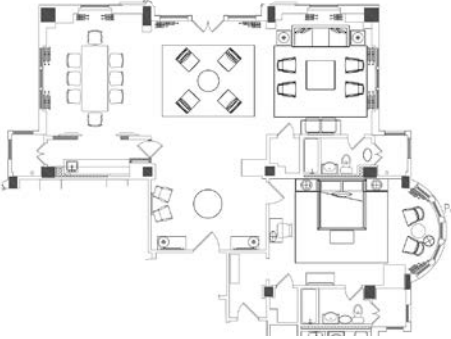
\$370.00 per night (*plus tax*)

- L-shaped guest room with a seating area on one end
- King bed only
- **Seating capacity = 5 persons**, includes one table with 4 chairs in the seating area and an armchair in the sleeping area

Please note: Every effort is made to ensure the accuracy of the interviewing room floor plans and descriptions. Changes and alterations may occur and are beyond the control of the AALS.

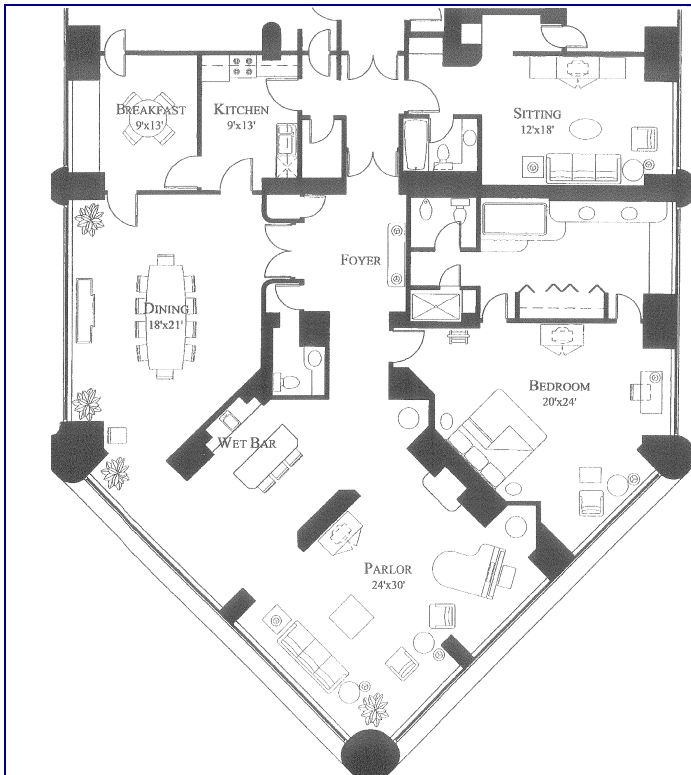
WARDMAN TOWER

The Wardman Tower is accessible from Center Tower via a connecting hallway past the hotel's retail shops located on the Lobby Level. As the historic portion of the hotel, interviewing rooms may contain custom furniture and antiques. While each room will have the corresponding seating capacity, the configurations may vary. All interviewing rooms and guest rooms are non-smoking. Please note that all rooms are subject to 14.5% sales tax.

Interviewing Room Floor Plan	Description
	<p><u>Interviewing Suites</u> \$480.00 per night (<i>plus tax</i>)</p> <ul style="list-style-type: none"> • One bedroom suite • King bed only • Bedroom entrance is through the parlor only • Seating capacity = 6 persons, including the parlor's sofa and an armchair
	<p><u>Parlor Suite</u> \$500.00 per night (<i>plus tax</i>)</p> <ul style="list-style-type: none"> • One bedroom suite • King bed only • Bedroom entrance is through the parlor only • Seating capacity = 7 persons, including the parlor's sofa and armchairs
	<p><u>Executive Suite</u> \$570 per night (<i>plus tax</i>)</p> <ul style="list-style-type: none"> • One bedroom suite • King bed only • Bedroom entrance is through the parlor only • Seating capacity = 10 persons, including the parlor's sofa, loveseat, and armchairs
	<p><u>Hospitality Suite</u> \$899 per night (<i>plus tax</i>)</p> <ul style="list-style-type: none"> • One bedroom suite • King bed only • Bedroom entrance is through the parlor only • Seating capacity = 15 persons, including the parlor's sofa and armchairs, kitchen seating for 4, and dining room seating for 8

Please note: Every effort is made to ensure the accuracy of the interviewing room floor plans and descriptions. Changes and alterations may occur and are beyond the control of the AALS.

Presidential Suites are located in both the Center and Wardman Towers.

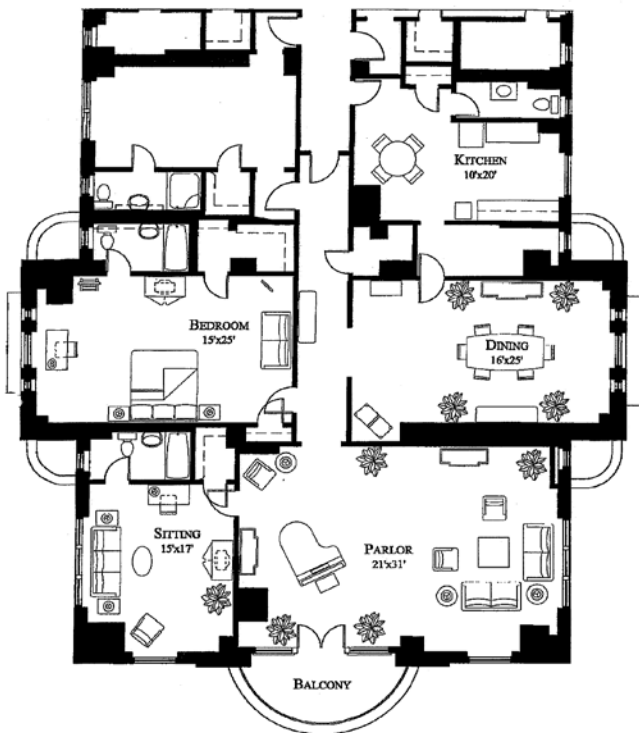


Sample Center Tower Suite

Presidential Suites

\$1,199.00 per night (*plus tax*)

- One bedroom suite
- King bed only
- In addition to the sleeping room and parlor, these suites include a dining room with 10 chairs, a kitchen, breakfast room, and entrance foyer.
- Seating capacity = 24 persons throughout the entire suite



Sample Wardman Tower Suite

Please note: Every effort is made to ensure the accuracy of the interviewing room floor plans and descriptions. Changes and alterations may occur and are beyond the control of the AALS.