

# PARC 55

— SAN FRANCISCO —

A HILTON HOTEL

## PRESIDENTIAL SUITE



- 720 square foot parlor
- Spectacular bay / city view
- Separate dining area
- Jacuzzi Tub in oversized master bathroom
- ½ bath in parlor
- Only one suite available
- Floor plan shows a 2-bedroom suite – second bedroom available at an additional cost.

\$575 per night for 1-bedroom suite; 2<sup>nd</sup> bedroom at \$171 per night; taxes additional

## SUNSET SUITE



- 440 square ft parlor
- Spectacular bay / city views
- Separate dining area
- Jacuzzi Tub in oversized master bathroom
- King bed
- ½ bath in parlor
- Four suites available
- Floor plan shows a 2-bedroom suite – second bedroom with two beds available at an additional cost.

\$425 per night for 1-bedroom suite; 2<sup>nd</sup> bedroom at \$171 per night; taxes additional

## BAYVIEW SUITE



- 425 square ft parlor
- Spectacular bay / city view
- Separate dining area
- King bed
- Oversized master bathroom
- ½ bath in parlor
- Four suites available
- Floor plan shows a 2-bedroom suite – second bedroom available at an additional cost.

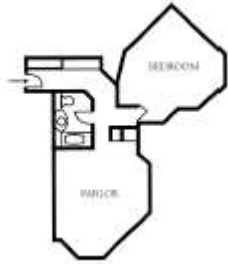
\$400 per night for 1-bedroom suite; 2<sup>nd</sup> bedroom at \$171 per night; taxes additional

# PARC 55

— SAN FRANCISCO —

A HILTON HOTEL

## SKYLINE SUITE



- 240 square ft parlor
- Various city views
- Four suites available

\$210 per night for 1-bedroom suite; taxes additional

## JUNIOR KING (CORNER SUITE)

No diagram available

- 384 square feet
- Oversized king bedded rooms
- Inside the same area, there is a couch and coffee table
- The couch can be pulled out to sleep an additional person
- The desk is closer to the bed so there is a nice separation between the living space and the bed.

\$265 per night; taxes additional