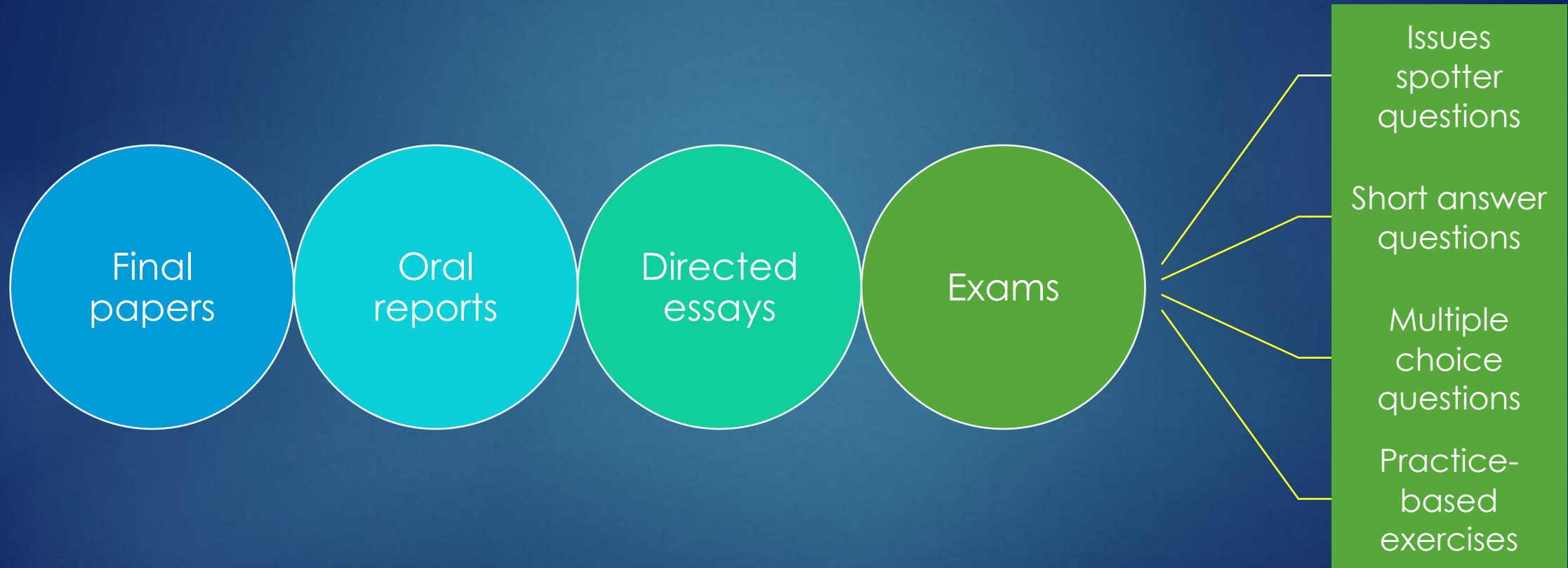




Summative Assessment

KRIS FRANKLIN, 2022

Types of Summative Assessments



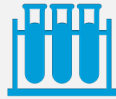


Assess What You Teach

➤ Begin from your syllabus

- What major subtopics does this body of law address?
- What kinds of problems does this body of law govern?
- What major tensions exist in this area of law, and why/how would opposing parties view them differently?

List Issues and (tentatively) Assign Importance



Do NOT try to test every single thing!



Represent key concepts in *rough* proportion to importance



Revise assessment instruments as you think through grading



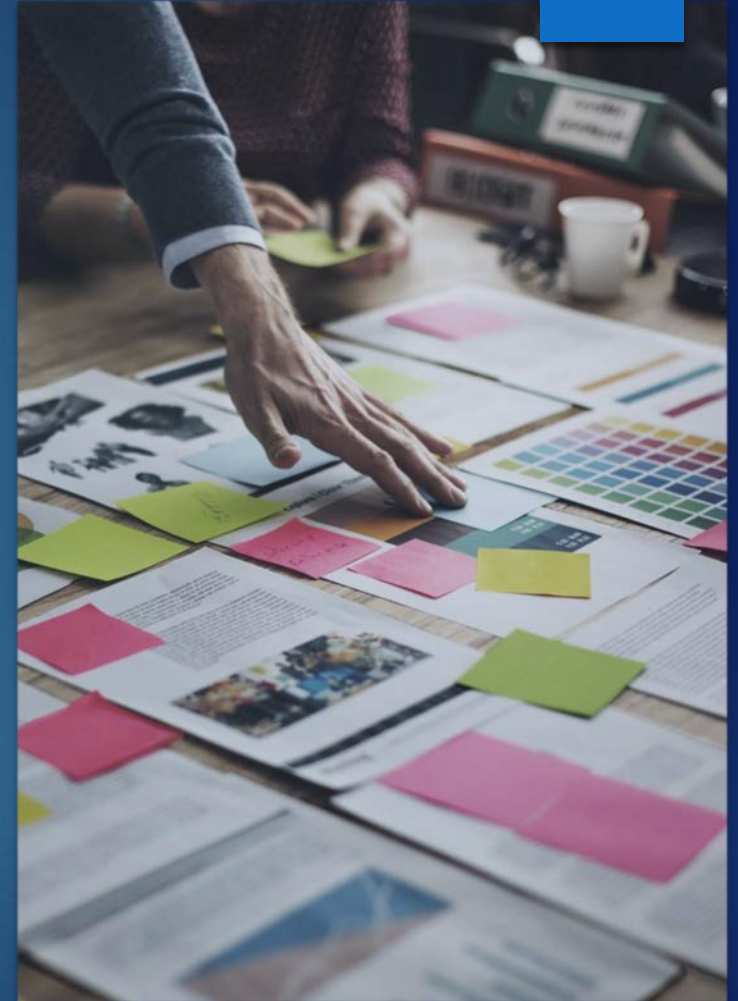
Expect to further refine when you read student responses

Designing Questions

➤ Construct a story

A client walks into your office and ____ has happened.

- Include major & minor issues
- Distractors?
- Plan to have a colleague read and outline



Edit Your Problem



- Read your story like a test-taker
 - Edit to avoid (unintended) ambiguity
 - Edit to highlight hard-to-spot issues
 - Edit to suggest—but not fully reveal—more advanced issues
 - Edit to avoid story for story's sake

Refine Your Problem



➤ Review your prompt

- Put test-takers in role or ask for objective analysis?
- General discussion?
- Multiple and more specific inquiries?

Construct a Grade Sheet

