



Association of American Law Schools

September 15, 2008

MEMORANDUM 2008-13

President

John H. Garvey
Boston College

President-Elect

Rachel F. Moran
University of California,
Berkeley

Immediate Past President

Nancy H. Rogers
The Ohio State University

Serving through 2008

H. Reese Hansen
J. Reuben Clark Law School
Brigham Young University
Robert C. Post
Yale Law School

Serving through 2009

W.H. Knight, Jr. (Joe)
University of Washington

Lauren K. Robel
Indiana University-
Bloomington

Serving through 2010

R. Lawrence Dessem
University of Missouri-
Columbia

Leo P. Martinez
University of California,
Hastings

*Executive Vice President
and Executive Director*

Carl C. Monk

Deputy Director

David A. Brennan

Managing Director

Jane M. La Barbera

TO: Deans of Member and Fee-Paid Schools, Interested Registrants and Exhibitors at the 2009 Annual Meeting

FROM: Jane M. La Barbera *JML* and Mary E. Cullen *MAC*

SUBJECT: Description of Suites Available at the 2009 Annual Meeting in San Diego

Attached you will find floor plans and/or brief descriptions of the various suites that are available at the two participating hotels, the Manchester Grand Hyatt San Diego and the San Diego Marriott Hotel and Marina in San Diego for the AALS Annual Meeting to be held January 6-10, 2009.

You may reserve a suite for the 2009 Annual Meeting via internet, phone, fax or mail. If you choose to use the housing reservation form, it can be found at <http://www.aals.org/am2009/hotel.html> or in the Annual Meeting brochure which will be sent to you under separate cover. Please note that the Annual Meeting Registration Form is sent to a different location than the Housing Reservation Form.

All suite reservations must be made through the AALS Housing Bureau, not the individual hotels. All suites will be booked and confirmed pending AALS approval.

Suite reservations require a credit card guarantee. The Housing Bureau will not make your reservation unless a valid credit card is provided. One night's room charge and tax will be charged to the credit card on or after December 20, 2008 by the assigned hotel.

If you do not want to guarantee by credit card and prefer to pay by check, please call (800) 974-3084 to make your reservation. You will be receive an acknowledgement of your reservation and will be instructed to send a check for one night's room and tax to the assigned hotel on or after December 20th. You will also receive a reminder email from the Housing Bureau in mid-December to send your check to the assigned hotel.

You may (1) reserve a suite online at <http://www.aals.org/am2009/hotel.html>, (2) call (800) 974-3084, (3) fax the form to the Housing Bureau at (301) 694-5124 or (4) mail the form to the Housing Bureau at P.O. Box 4088, Frederick, MD 21705,

If your first choice of a suite is no longer available and there is a comparable suite (description and price) available at another hotel, the housing service will automatically assign it. If a suite type is not available and the next available type is an increase in price per night, the Housing Bureau will call you with available options.

Changes and Cancellations

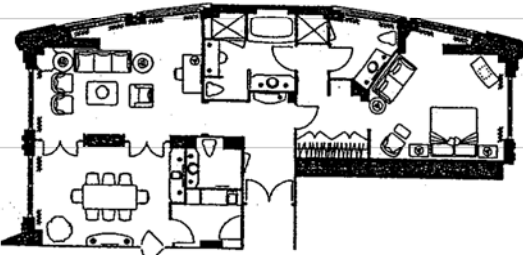
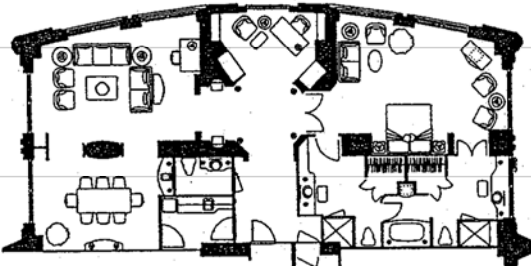
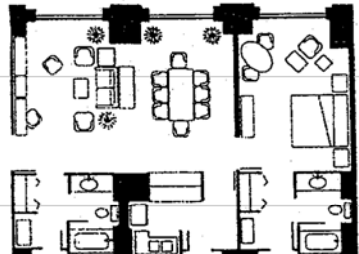
Changes or cancellation of your hotel reservation **before December 26th** can be made after you have received your confirmation by contacting the housing service by phone (800) 974-3084, fax (301) 694-5124 or email aals@experient-inc.com. **After December 26th, wait until December 29th** and then make the change or cancellation directly with your assigned hotel. Should you need to cancel your reservation, be sure to obtain a cancellation number from the hotel.

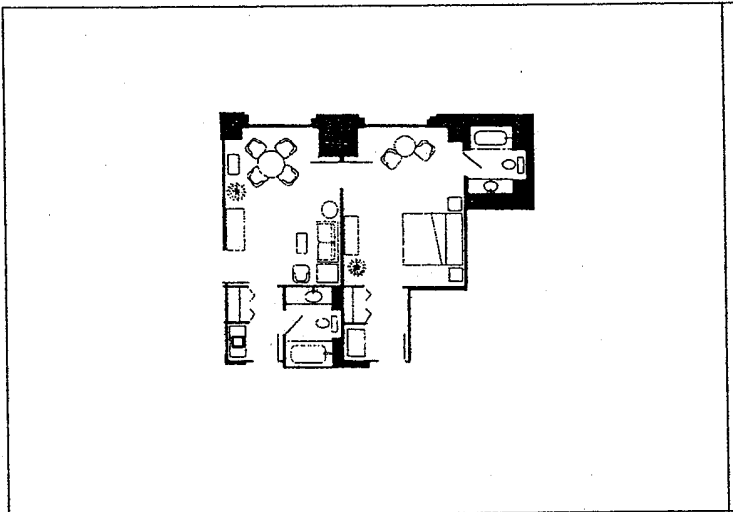
If you need to cancel your reservation, please do so by 6:00 p.m. on your expected arrival date or your credit card will be charged for one night's room and tax.

If you have questions about the suite beyond what is provided with the suite diagrams, such as furniture and other amenities, we suggest you contact the hotel directly.

Attachments: Suite Diagrams and/or Descriptions for:
Manchester Grand Hyatt
San Diego Marriott Hotel and Marina

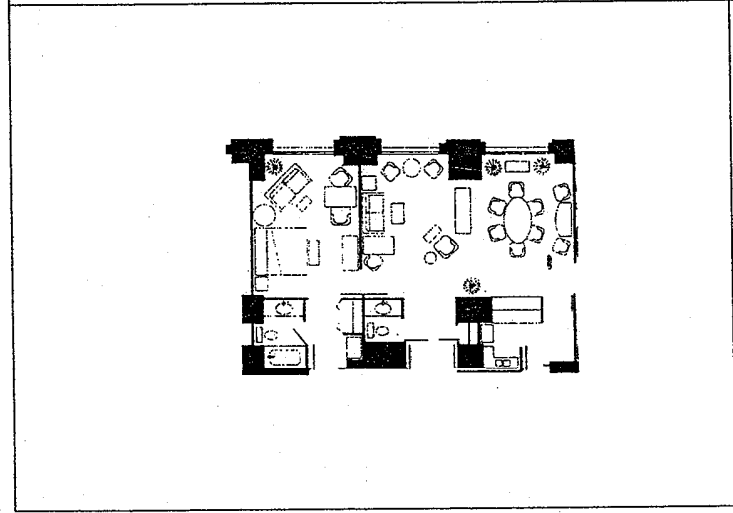
Manchester Grand Hyatt Suites

 A detailed floor plan of a Presidential Suite. The layout includes a large living area with a sofa and chairs, a dining table with chairs, a kitchen area with a sink and stove, a bedroom with a king bed, a bathroom, and a large conference table with chairs. The room has a curved wall on the top side.	<p><u>Presidential Suite @ \$560 per night plus Sales Tax</u></p> <p>One-bedroom suite of 1,450 square feet. Can accommodate reception for 30 people. Bedroom has king bed. An optional second connecting bedroom with two double beds is available at the rate of \$140/145 (based on single/double occupancy) plus tax per night.</p>
 A detailed floor plan of a Penthouse Suite. The layout is similar to the Presidential Suite, featuring a living area, dining table, kitchen, bedroom with a king bed, bathroom, and conference table. It also has a curved wall on the top side.	<p><u>Penthouse Suite @ \$600 per night plus Sales Tax</u></p> <p>One-bedroom suite of 1,700 square feet. Can accommodate reception for 30 people. Bedroom has king bed. An optional second connecting bedroom with two double beds is available at the rate of \$140/145 (based on single/double occupancy) plus tax per night.</p>
 A detailed floor plan of a Conference Suite. The layout is more compact, featuring a living area with a conference table for 8 people, a dining table, a kitchen, a bedroom with a king or double bed, and a bathroom.	<p><u>Conference Suites @ \$320 per night plus Sales Tax</u></p> <p>One-bedroom suite of 700 square feet. Living area contains conference table for 8 people and can accommodate reception for 20 people. Bedroom has king or double beds. An optional second connecting bedroom with King or double beds is available at the rate of \$140/145 (based on single/double occupancy) plus tax per night.</p>



Executive Suites @ \$320 per night plus Sales Tax

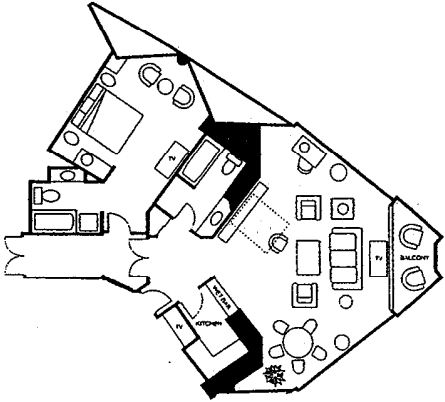
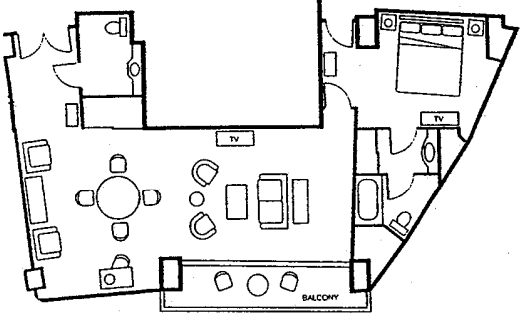
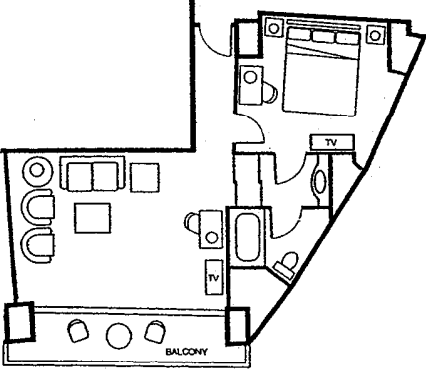
One-bedroom suite of 350 square feet. Can accommodate reception for 10 people. Bedroom has king or double beds. An optional second connecting bedroom with King or double beds is available at the rate of \$140/145 (based on single/double occupancy) plus tax per night.



VIP & Regency Suite @ \$550 per night plus Sales Tax

One-bedroom suite of 700 square feet. Can accommodate reception for 20 people. Bedroom has king or double beds. An optional second connecting bedroom with King or double beds is available at the rate of \$140/145 (based on single/double occupancy) plus tax per night.

San Diego Marriott Hotel & Marina Suites

	<p><u>Hospitality Suites @ \$400 per night plus Sales Tax</u></p> <p>One-bedroom suites has 504 square foot parlor which can accommodate approximately 30 people for a reception. Entertainment/wet bar; 180 degree view from parlor; balcony. Murphy bed and sleeper sofa in living area. Bedroom has king or double beds. An optional second connecting bedroom with King or double beds is available at the rate of \$140/145 (based on single/double occupancy) plus tax per night.</p>
	<p><u>Deluxe Suites @ \$385 per night plus Sales Tax</u></p> <p>One-bedroom bay view suite has 448 square foot parlor which can accommodate 30 people for a reception. Entertainment bar with small refrigerator; balcony. Bedroom has queen bed. An optional adjacent bedroom with king bed is available at the rate of \$140/145 (based on single/double occupancy) plus tax per night.</p>
	<p><u>Executive Suites @ \$275 per night plus Sales Tax</u></p> <p>One-bedroom bay view suite has 234 square foot parlor which can accommodate 15 people for a reception. Balcony; sleep sofa in living area. Bedroom has queen bed. An optional adjacent bedroom with king bed is available at the rate of \$140/145 (based on single/double occupancy) plus tax per night.</p>